



Locations to Develop in Wythe County, Virginia

Presented by
Matthew C. Hankins
Assistant County Administrator
April 26, 2023



Stats on Wythe County

Population

28,111

Housing units

14,017

Median Gross Rent

\$637

Households

12,215

Households with Internet

77.8%

Persons per household

2.32

Daily travelers

60,000+

Public Schools

12

Geographic Makeup

Rural

Big Developments in Wythe County

New Developments

- Amtrak
- APEX Center
 - Hockey
 - Entertainment
- Blue Star

Expansion

- Musser Lumber
- Progress Park
- Klockner Pentaplast





Austinville, Virginia

Attractions:

- Stephen F. Austin Memorial Park
- Close to Jackson Memorial Elementary School
- Close to New River Trail State Park
- Shot Tower Historical District

Land type: Outdoor & Public Space, Hospitality, Commercial & Office, and Residential

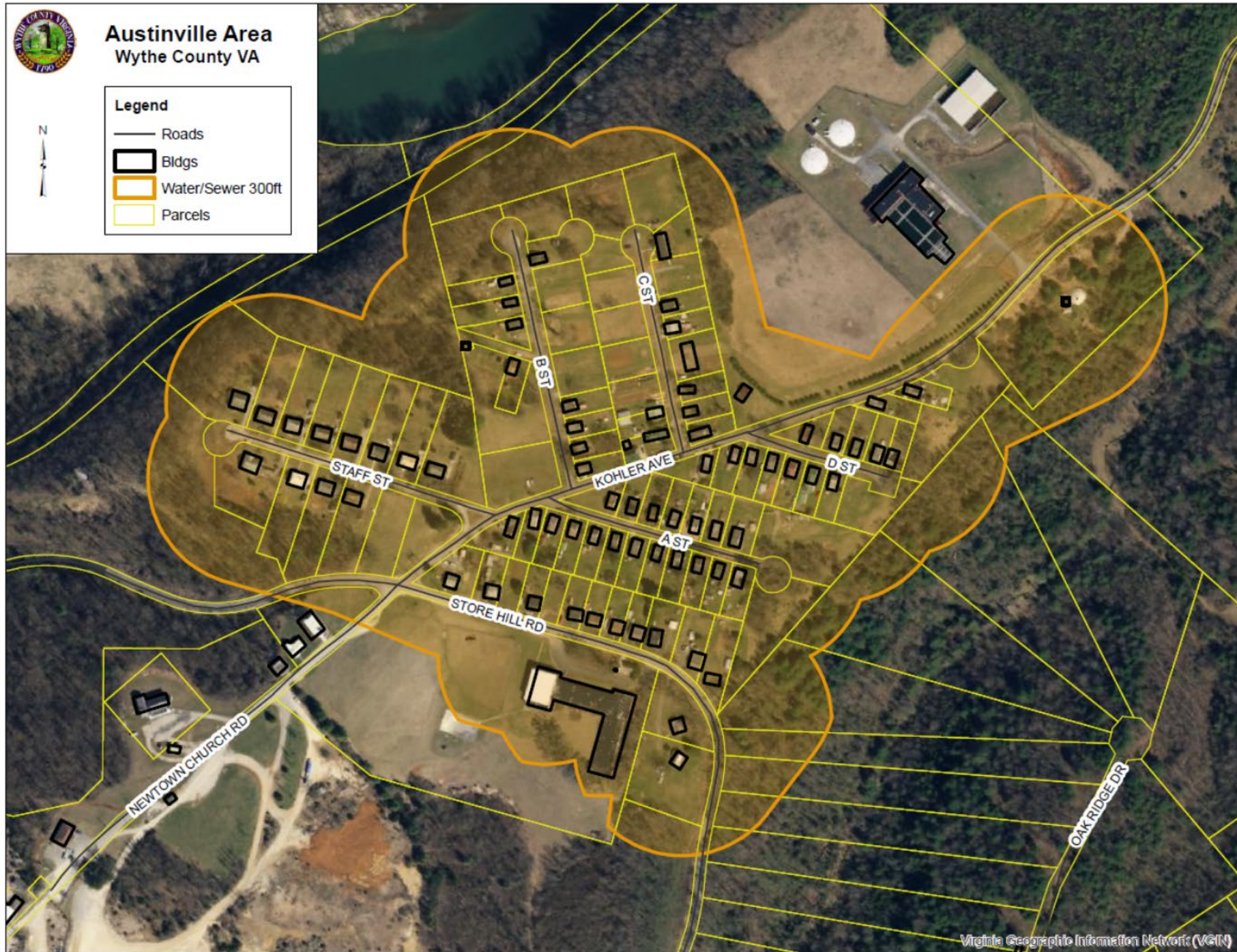
Public Water / Sewer: Access to both



Austinville Area Wythe County VA

Legend

- Roads
- ▭ Bldgs
- ▭ Water/Sewer 300ft
- ▭ Parcels





Fort Chiswell, Virginia

Three Sites*

Attractions:

- APEX Center
- Close to Ft Chiswell High School and Middle School
- Carter's Park

Land type: Outdoor & Public Space, Hospitality, Commercial & Office, and Residential

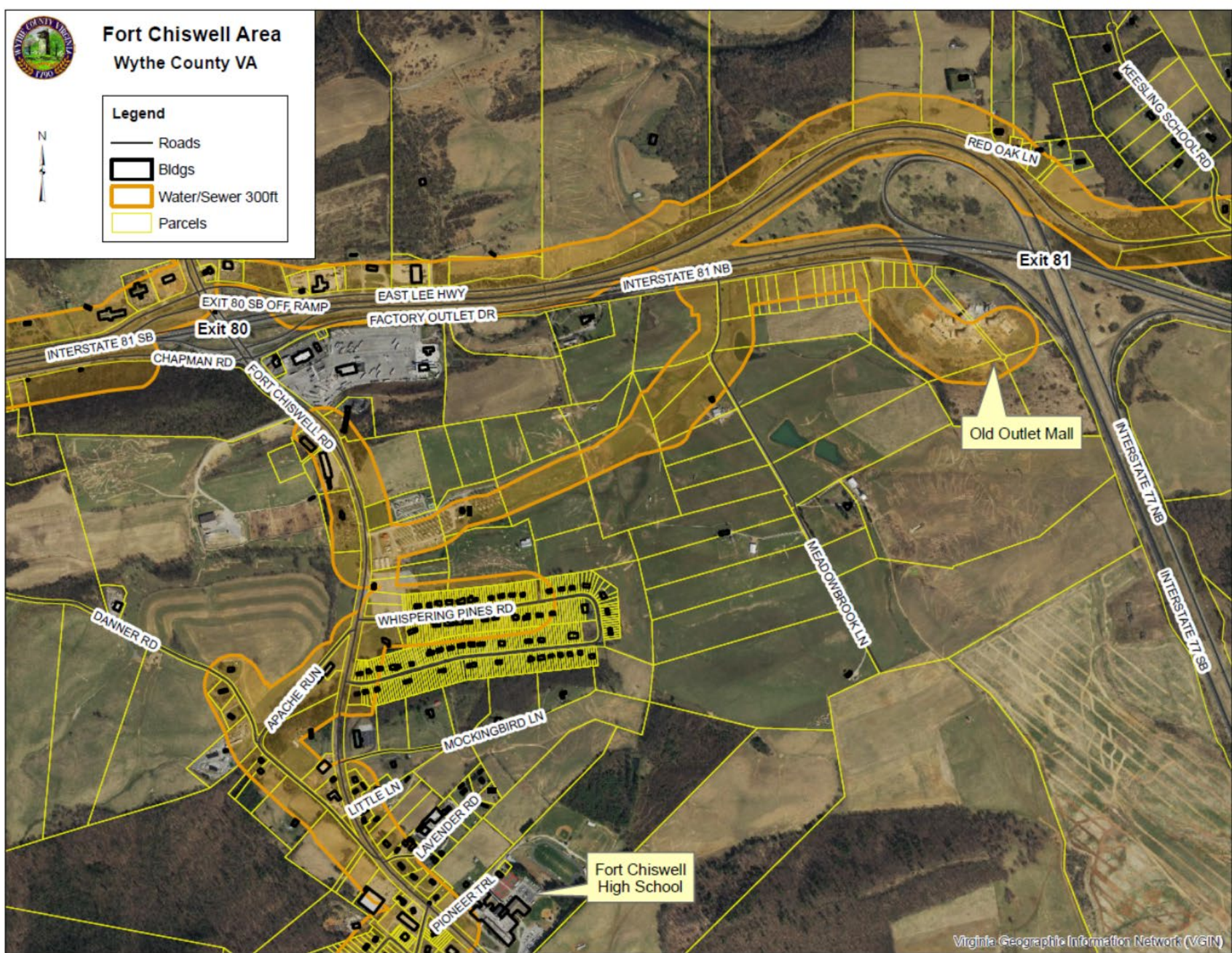
Public Water / Sewer: Access to both



Fort Chiswell Area Wythe County VA

Legend

- Roads
- ▭ Bldgs
- Water/Sewer 300ft
- ▭ Parcels

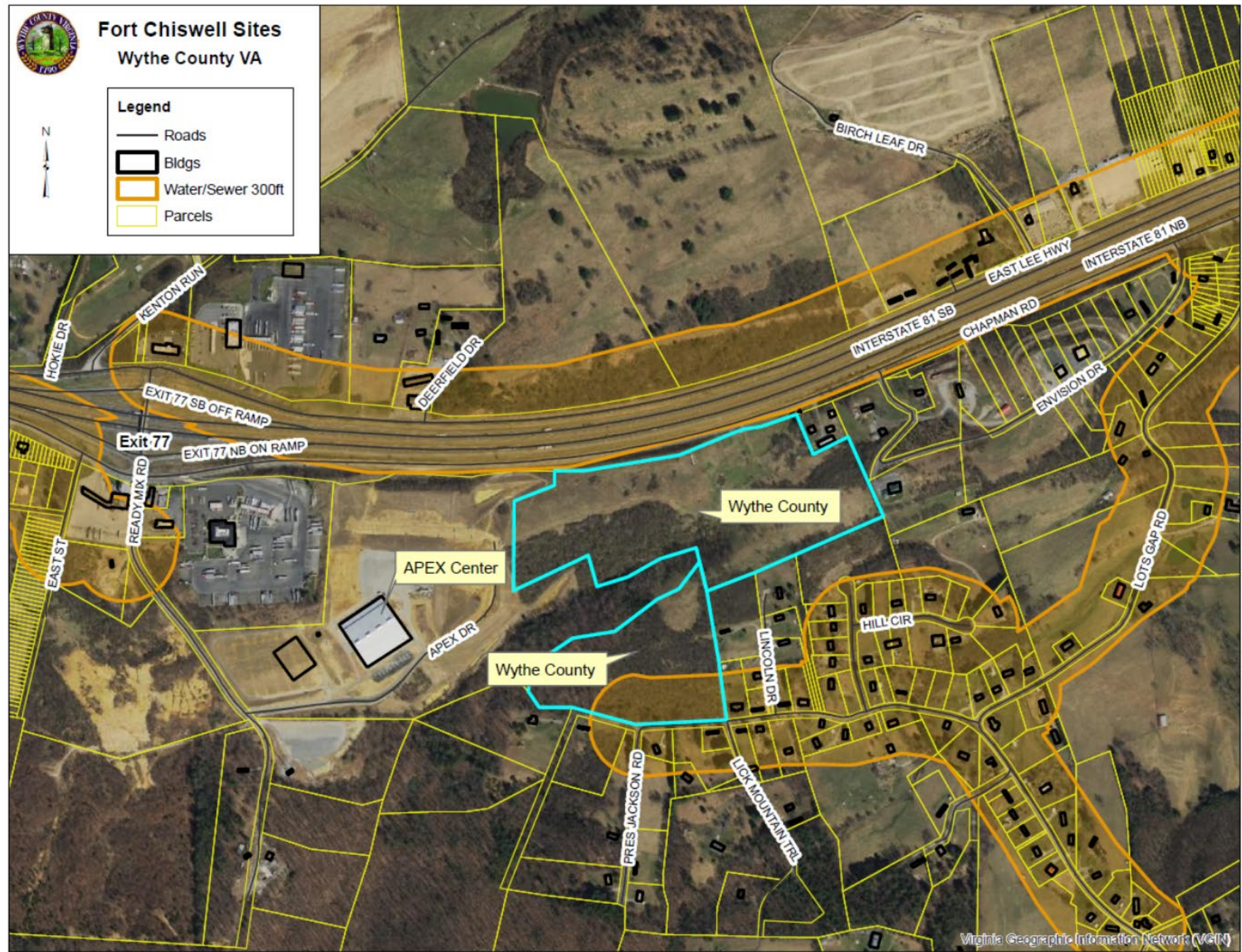




Fort Chiswell Sites Wythe County VA

Legend

- Roads
- Bldgs
- Water/Sewer 300ft
- Parcels

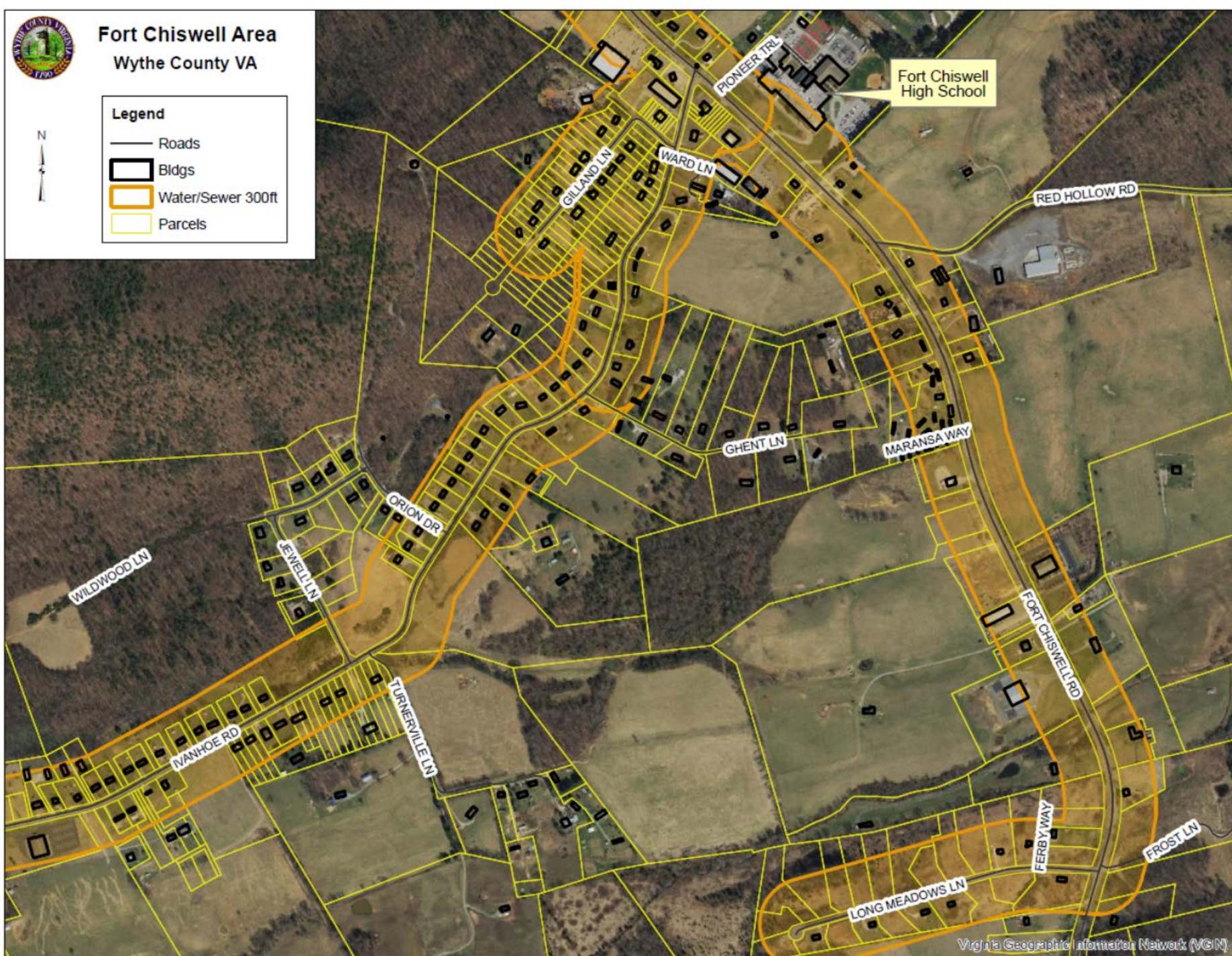




Fort Chiswell Area Wythe County VA

Legend

- Roads
- ▭ Bldgs
- Water/Sewer 300ft
- ▭ Parcels





Grahams Forge, Virginia

Attractions:

- Close to both I-81 and I-77
- Close to Ft Chiswell Middle & High School

Land type: Outdoor & Public Space, Hospitality, Commercial & Office, and Residential

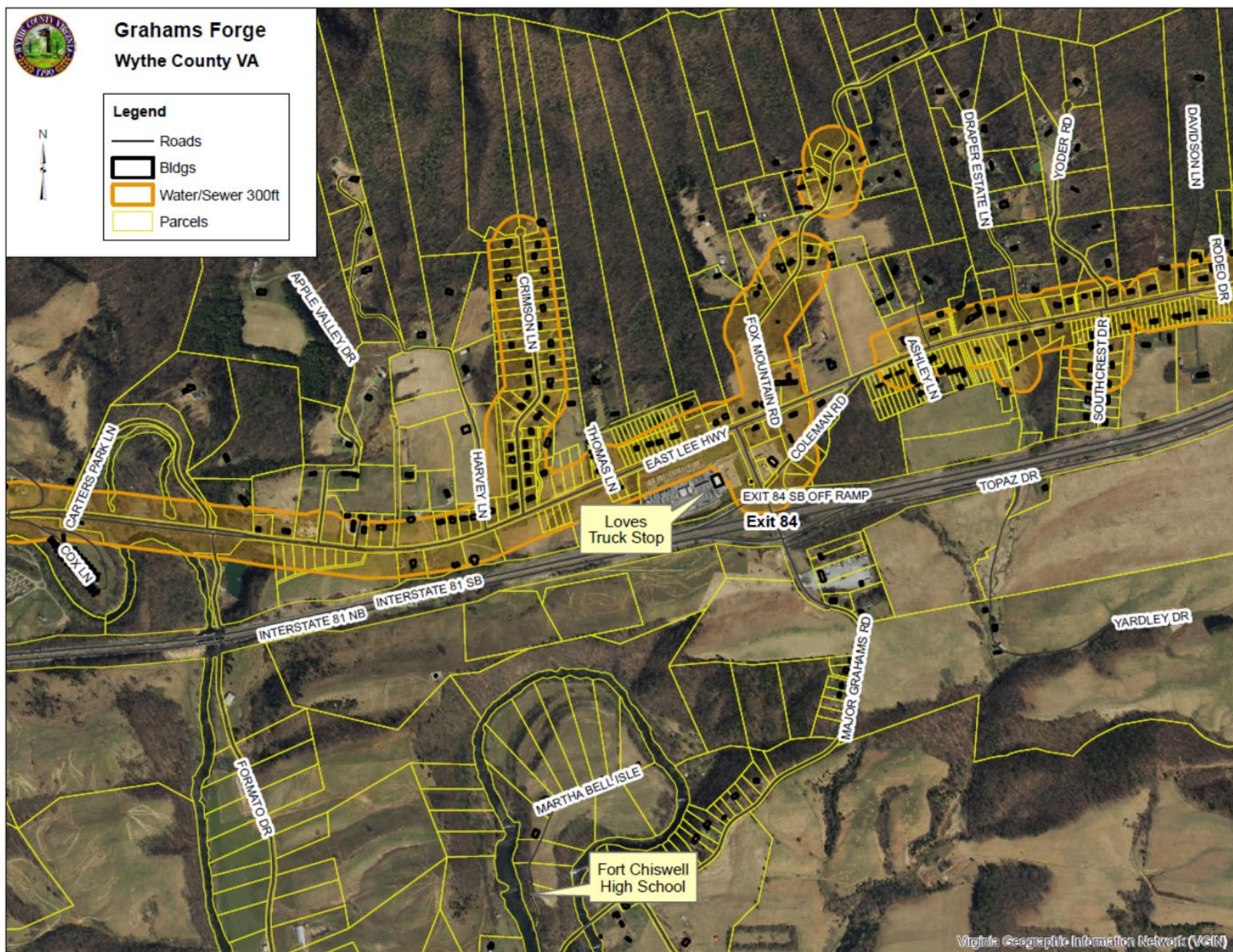
Public Water / Sewer: Access to both



Grahams Forge Wythe County VA

Legend

- Roads
- Bldgs
- Water/Sewer 300ft
- Parcels





Poplar Camp, Virginia

Attractions:

- Close to Jackson Memorial Elementary School
- Close to New River Trail State Park
- Shot Tower Historical District

Land type: Outdoor & Public Space, Hospitality, Commercial & Office, and Residential

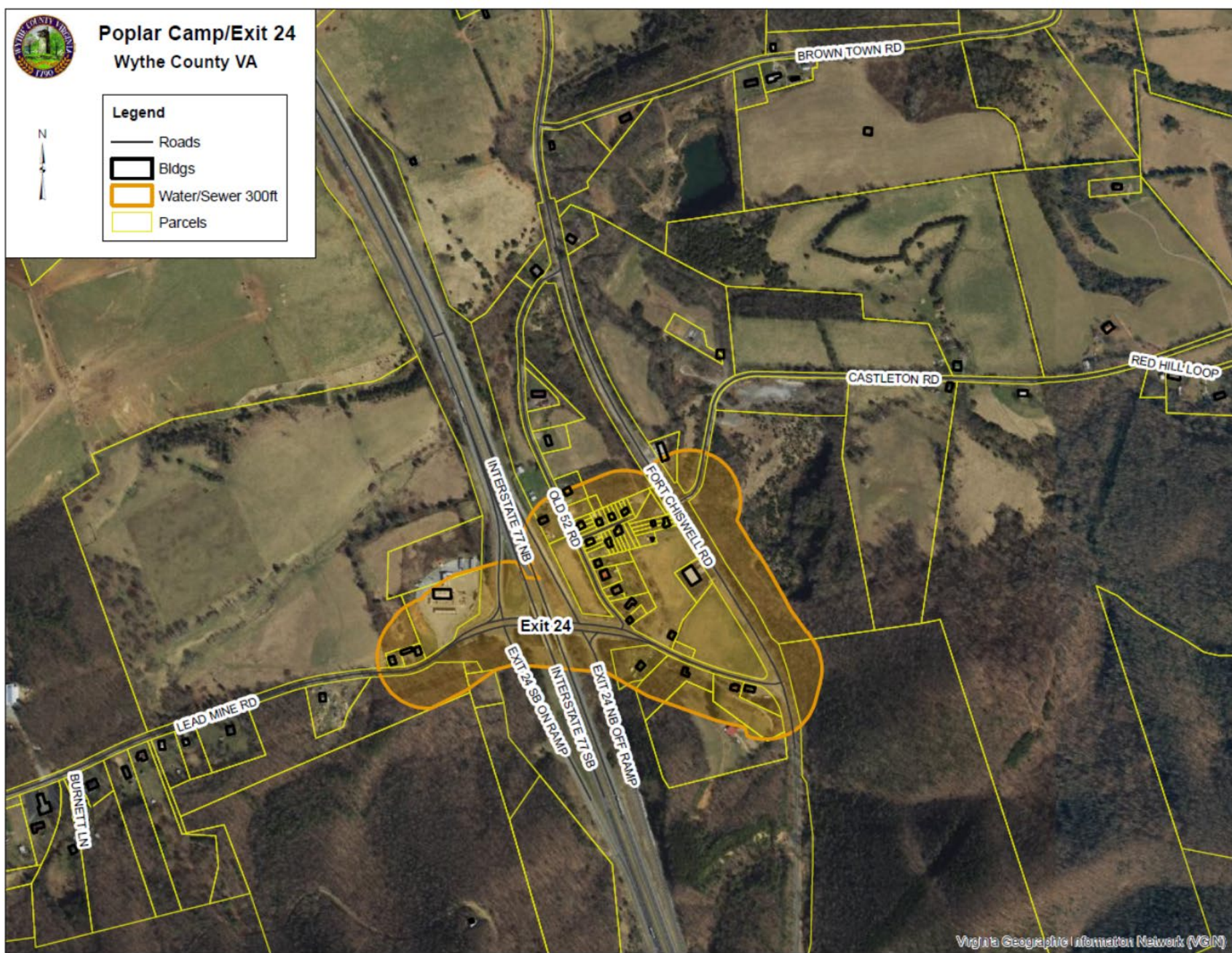
Public Water / Sewer: Access to both



Poplar Camp/Exit 24 Wythe County VA

Legend

- Roads
- ▭ Bldgs
- Water/Sewer 300ft
- Parcels





Rural Retreat, Virginia

Attractions:

- Close to Rural Retreat Elementary, Middle and High School
- Rural Retreat Depot
- Rural Retreat Lake & Campground

Land type: Outdoor & Public Space, Hospitality, Commercial & Office, and Residential

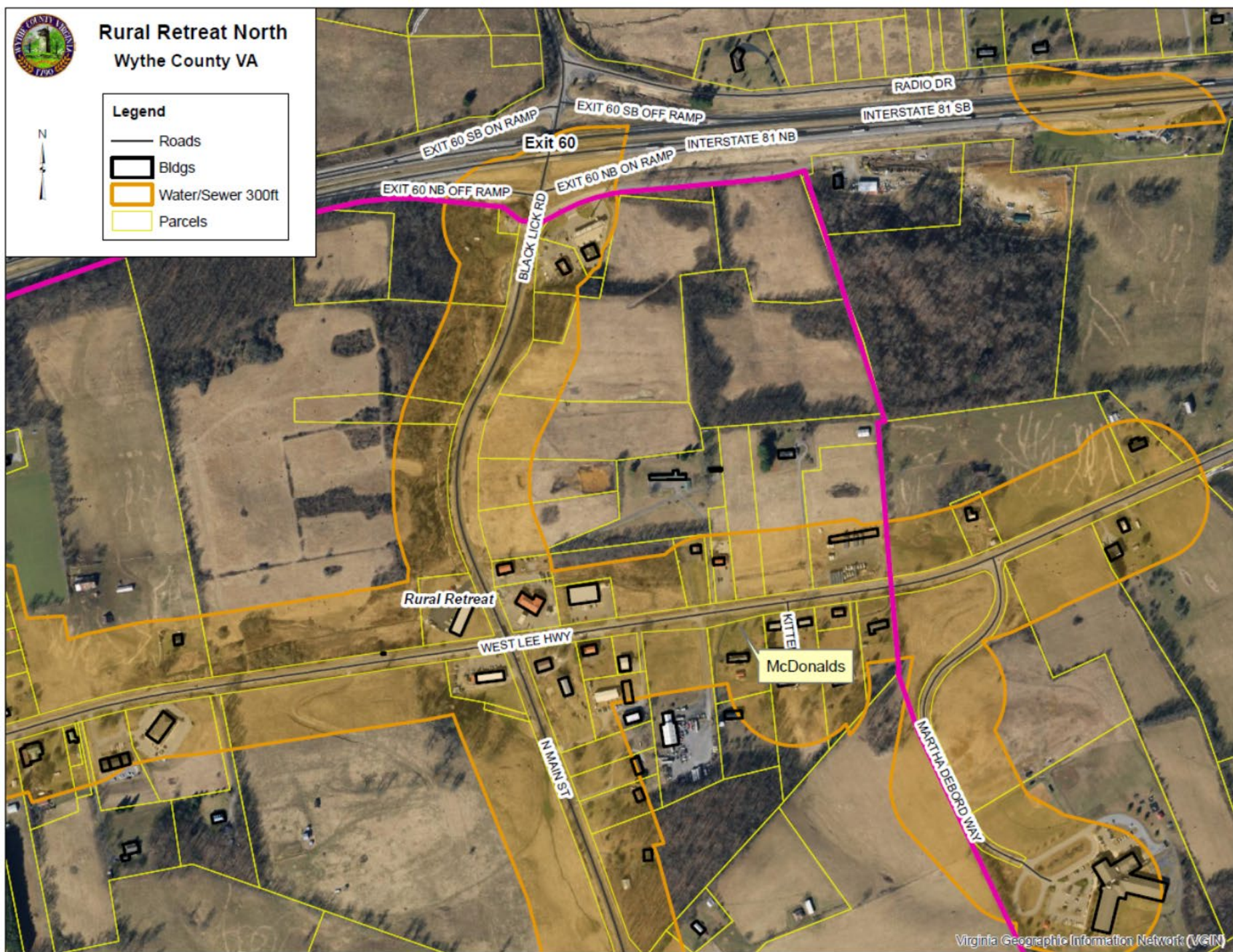
Public Water / Sewer: Access to both



Rural Retreat North Wythe County VA

Legend

- Roads
- ▭ Bldgs
- ▭ Water/Sewer 300ft
- ▭ Parcels





Max Meadows, Virginia

Attractions:

- Close to Max Meadows Elementary School

Land type: Outdoor & Public Space, Hospitality, Commercial & Office, and Residential

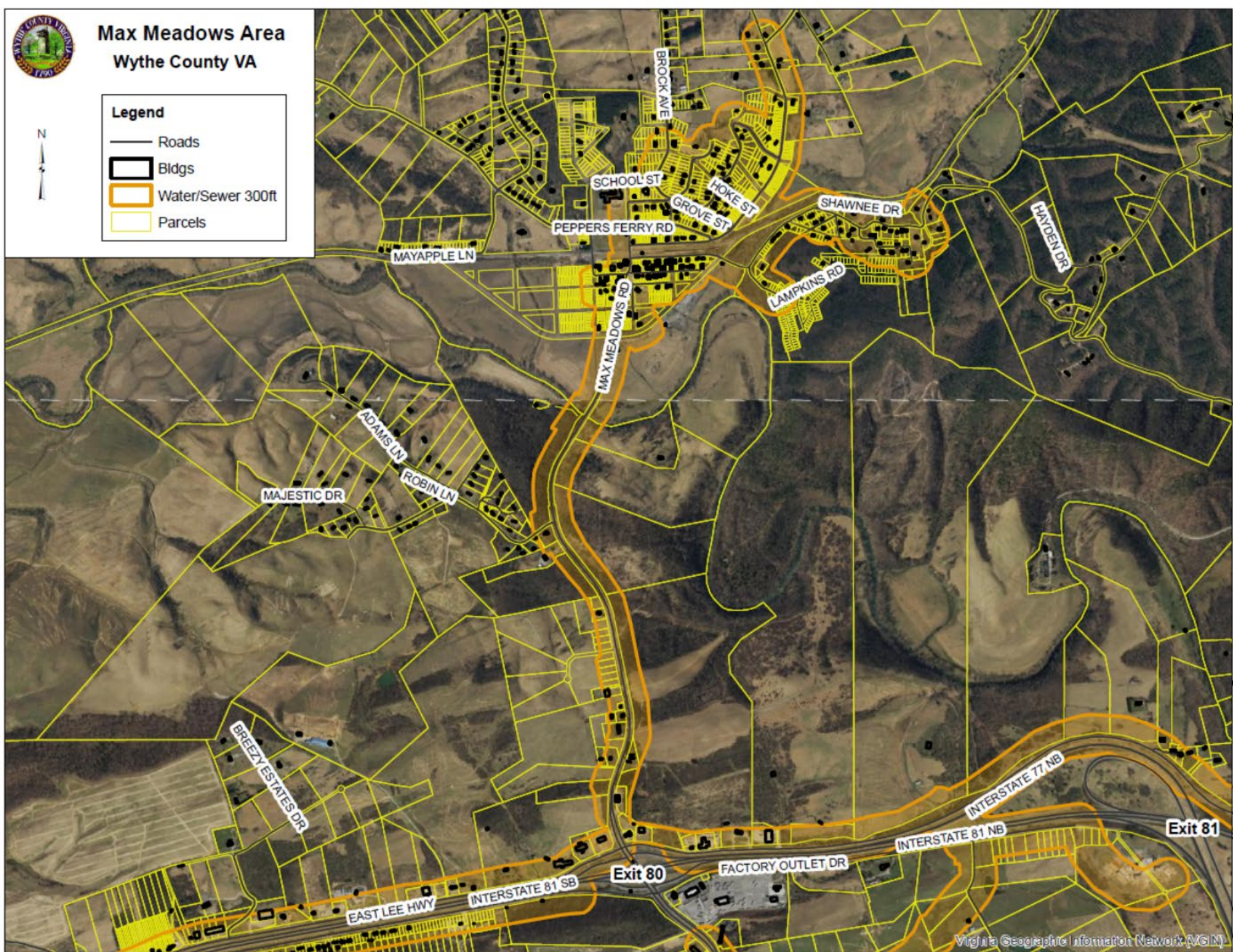
Public Water / Sewer: Access to both



Max Meadows Area Wythe County VA

Legend

- Roads
- Bldgs
- Water/Sewer 300ft
- Parcels





Contact Info

Matthew Hankins

276-223-4514

mchankins@wytheco.org

Lisa Shelton

276-223-4508

ldshelton@wytheco.org